

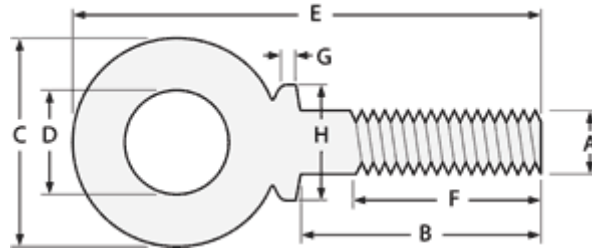
Eye Bolt With Shoulder

C-1035 Steel

Plain = ISF010-----

Zinc = ISF010-----Z1

Galvanized = ISF010-----GD



A	B	C	D	E	H	G	F	Weight per 100
Diameter	Shank Length	Outside Eye Diameter	Inside Eye Diameter	Overall Length	Shoulder Diameter	Shoulder Thickness	Thread Length	
1/4	1"	1 1/4"	3/4"	2 1/4"	17/32	5/32	1"	5
5/16	1 1/8"	1 1/2"	7/8"	2 5/8"	19/32	5/32	1 1/8"	10.5
3/8	1 1/4"	1 21/32"	1"	2 29/32"	21/32	5/32	1 1/4"	15.5
7/16	1 3/8"	1 27/32"	1 3/32"	3 7/32"	29/32	7/32	1 3/8"	20.5
1/2	1 1/2"	2 1/16"	1 3/16"	3 9/16"	1 1/32	9/32	1 1/2"	33
9/16	1 5/8"	2 9/32"	1 9/16"	3 29/32"	1 3/16	9/32	1 5/8"	44.5
5/8	1 3/4"	2 1/2"	1 3/8"	4 1/4"	1 9/16	13/32	1 3/4"	64
3/4	2"	2 13/16"	1 1/2"	4 13/16"			2"	90.5
7/8	2 1/4"	3 1/4"	1 11/16"	5 1/2"			2 1/4"	135
1	2 1/2"	3 9/16"	1 13/16"	6 1/16"			2 1/2"	190.5
1 1/8	2 3/4"	4"	2"	6 3/4"			2 3/4"	299.5
1 1/4	3"	4 7/16"	2 3/16"	7 7/16"			3"	399
1 1/2	3 1/2"	5 3/16"	2 1/2"	8 11/16"			3 1/2"	662.5

Dimensions per Chicago Hardware

Diameter and Thread	Working Limit	
	Straight Pull	45° Pull (Shoulder Only)
1/4"-20	500	125
5/16"-18	900	225
3/8"-16	1400	350
7/16"-14	2000	500
1/2"-13	2600	650
9/16"-12	3200	750
5/8"-11	4000	1000
3/4"-10	6000	1500
7/8"-9	7000	1750
1"-8	9000	2250
1 1/8"-7	12000	2500
1 1/4"-7	15000	3750
1 1/2"-6	21000	4900